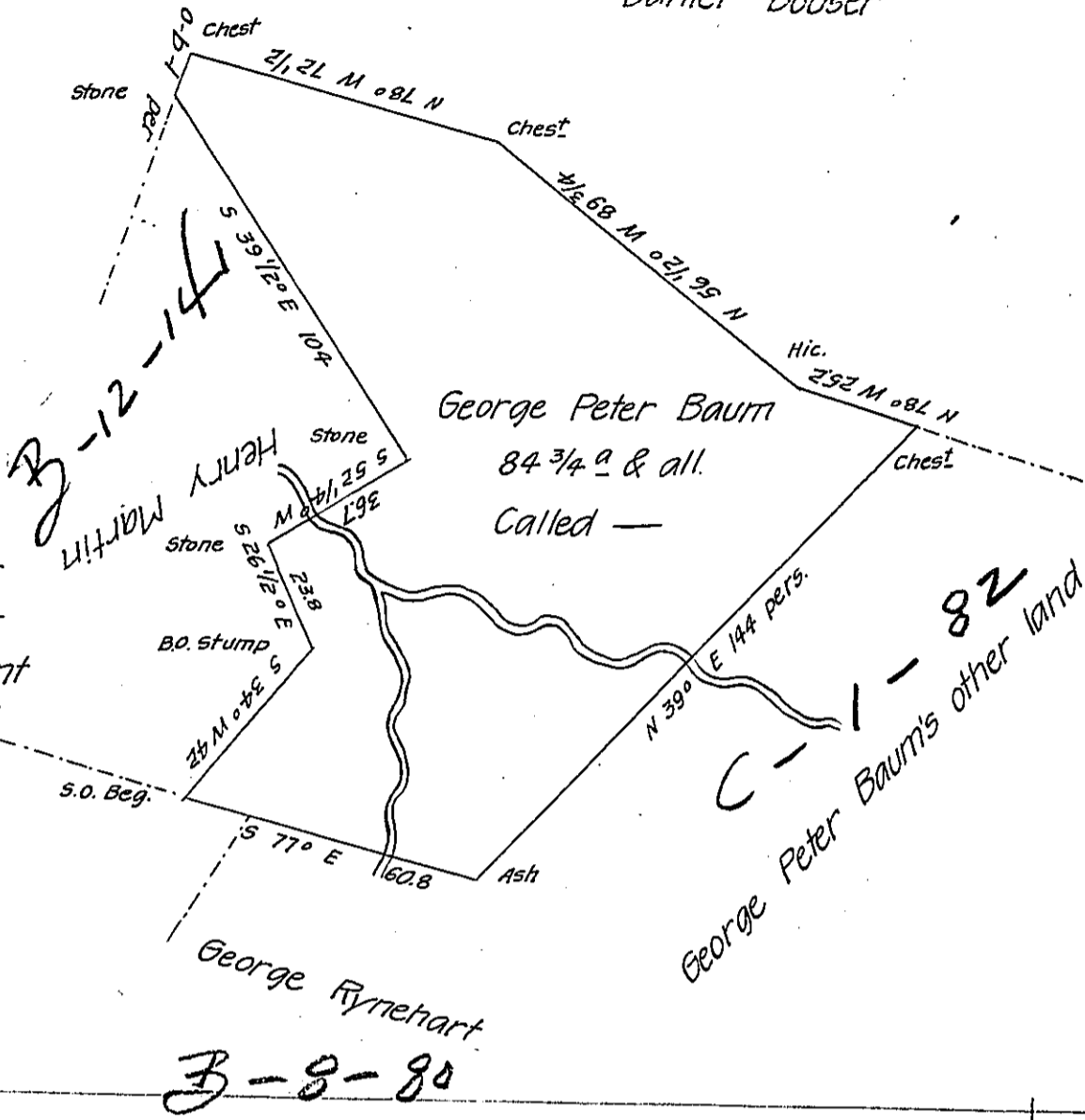


Daniel Bouser

85^{as} 77^{ps} Heidleman
84 " 120 - G. P. Baum
170 " 37 - Surveyed on a
warrant to Philip Heidle-
man dated 10th day of No-
vember 1748 as p^t warrant
of resurvey herein recited.
S. C.



Situated in Manheim Township York County and surveyed and divided off from a larger tract the 3^d day of May 1775 in pursu-
ance of a warrant of resurvey and divison granted unto the said
George Peter Baum and Henry Martin bearing date the 17th day
of April 1775.

By

Arch^d McClean D^y S^r

To John Lukens Esq^r

Surveyor General

IN TESTIMONY that the above is a copy of the original remaining on file in
the Department of Internal Affairs of Pennsylvania, made
conformably to an Act of Assembly approved the 16th day of
February, 1833, I have hereunto set my Hand and caused
the Seal of said Department to be affixed at Harrisburg,
this fourth day of May 1906.

Loac R. Brown
Secretary of Internal Affairs.